

# Mt. Sobo Spiritual Valley Trekking Course

## DATA

**Distance** About 2.5 km

**Required Time** About 1.5 hours

**Start / Finish** Mount Sobo Kobaru trailhead parking lot  
Kobaru, Taketa City

**Access** 30 minutes by car from JR Bungo Taketa station

Oita walking road

## Kyushu Nature Trail

### Oita Prefecture



Green native forests and their clear valley streams surround you

## \* Course Details

Mount Sobo, Mount Katamuki and Mount Okue are registered as a UNESCO Eco Park. The unique, beautiful scenery of steep mountains and deep gorges along the border of Oita and Miyazaki prefectures is a remarkable sight. Along this trekking course, the waters flowing down from Mount Sobo, selected as one of Japan's best 100 mountains, will soothe your spirit, and you can see numerous waterfalls carved out of the rocks over the centuries as well as rare plants.

Contact  
Information

Kami no Sato Exchange Center Odamaki

**TEL 0974-67-2288**

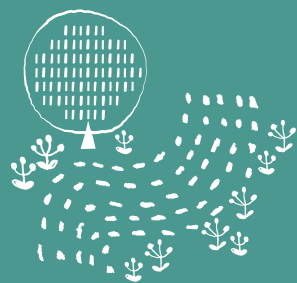
Map: Available (free of charge)

Kami no Sato Exchange Center Odamaki Guided  
tours available/Japanese only

Point of Interest



At Odamaki, you can buy lunch boxes and arrange for guides.



Oita walking road

## Kyushu Nature Trail

### Oita Prefecture

# Kuju Bogatsuru Course

## DATA

**Distance** About 10 km

**Required Time** About 6 hours

**Start / Finish** Kokonoe Trailhead  
Chojabaru, Oaza Tano, Kokonoe Town, Kusu District

**Access** 50 minutes by the Kokonoe community bus  
from JR Bungo Nakamura Station



The Tadewara Marsh and Kuju Bogatsuru are registered under the Ramsar Convention.

## \* Course Details

Start off from the Kokonoe trailhead at Chojabaru, walking along the boardwalk trail through the Tadewara Marsh towards the base of the mountain. After passing Amagaik Pond, the trail heads downwards and you will arrive at Bogatsuru. At the Bogatsuru Campground, you will find drinking water, toilets, and a small shelter. Passing behind the Hokke-in hot spring resort, the trail ascends again towards Sugamori Pass. Pass by Sabo Dam as the course takes you back to the Kokonoe trailhead.

Contact  
Information

Chojabaru Visitor's Center  
**TEL 0973-79-2154**

<http://kyushu.env.go.jp/nature/tyojyabaru/>  
Map: Available (some are free)  
<http://www.kltf.info/maps/oita/>

## Point of Interest



The Hokke-in Hot Spring Resort